

MIDTOWN PLAZA

SECTOR 59, GURUGRAM

CORPORATE OFFICE

UNIT NO- 501 - 508, FIFTH FLOOR, UNITECH TRADE CENTRE, SECTOR-43,
OPPOSITE PARK PLAZA HOTEL, NEAR HUDA CITY CENTRE METRO STATION,
GURUGRAM, HARYANA-122002
LLPIN NO. AAL-5036

+91-9891996996, 0124-4274045
CUSTOMERCARE@PYRAMIDINFRA TECH.COM

REGISTERED OFFICE

H-38, GROUND FLOOR, M2K WHITE HOUSE SECTOR - 57,
GURUGRAM HARYANA 122003

HRERA REGISTRATION NO.

HARERA REGISTRATION NO. 14 of 2020 | RC/REP/HARERA/GGM/398/130/2020/14

Disclaimer: Promoter urges every applicant to inspect the project site and shall not merely rely upon any artistic/architectural impression/images, plan or sales brochure and, therefore, requests to make personal judgment prior to submitting an application for allotment. The Project is being developed in phases, hence, certain facilities/amenities etc. may be used by allottee of other phases. *Rate mentioned above does not include GST and other statutory charges, if applicable. T & C of Affordable Housing Policy, 2013 Apply. 1 sq. mt. = 10.764 sq. ft., Building Plan approval no. ZP-1388/JD(RD)/2020/4137 dated 12/02/2020, Government approval: License No. 133 of 2019 dated 17/12/2019.

MIDTOWN PLAZA

SECTOR 59, GURUGRAM



PYRAMID HOME DEVELOPERS LLP

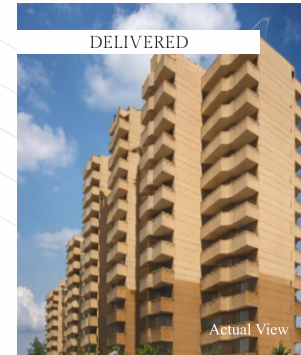
LLPIN No. AAL - 5036



Pyramid is known to be the most strong and stable in geometry, which has been recognized uniformly by one and all, be it the ancient civilizations of Egypt or the engineers of this ultra modern world. Our company stands for the same strength and stability that we offer to our clients through our buildings. The idea originated when these young professionals saw that hard-working common man is not able to build a house of his own because of the unprecedented price hike in real estate. They decided to provide quality accommodation to everyone at sensible price range, and in the year 2008 established Pyramid Infratech Private Limited formally. At Pyramid Infratech our motto is "Quality, Timely Delivery and Excellence", which we follow in word and action. With projects sold and under construction of area - 6 million SFT and upcoming projects of 3 million SFT to be launched within the FY 2023. Pyramid Infratech is a successful and sustainable real estate company and with our upcoming projects, we are looking forward to expanding future with high quality housing projects. Each of our residential unit is built on the foundation of good quality raw material, strong research and fair financial practices with timely deliveries. RERA registration have made our honesty and transparency more evident.

Residential

URBAN HOMES
SECTOR 70A



URBAN HOMES II
SECTOR 86



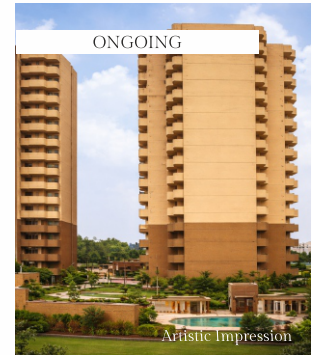
URBAN 67A
SECTOR 67A



FUSION HOMES
SECTOR 70A

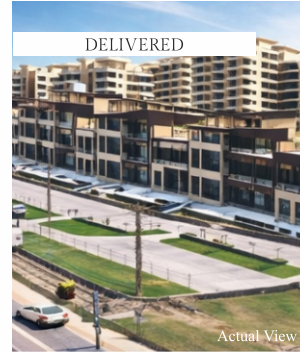


INFINITY
SECTOR 70

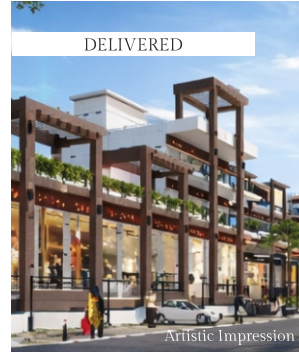


Commercials

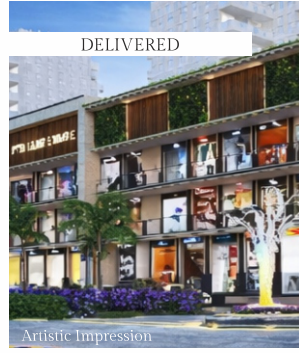
PYRAMID SQUARE 67A
SECTOR 67A



PYRAMID SQUARE 70A
SECTOR 70A



PYRAMID SQUARE 86
SECTOR 86



INFINITY PLAZA
SECTOR 70



FUSION PLAZA
SECTOR 70A



ELITE
SECTOR 86



HEIGHTS
SECTOR 85



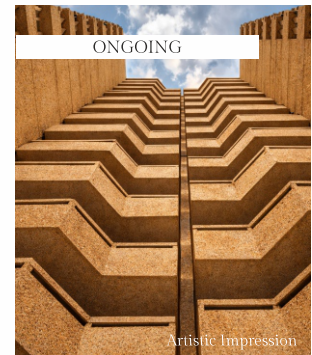
PRIDE
SECTOR 76



SPRING VALLEY
SECTOR 35, SOHNA



ALTIA
SECTOR 70



ELITE PLAZA
SECTOR 86



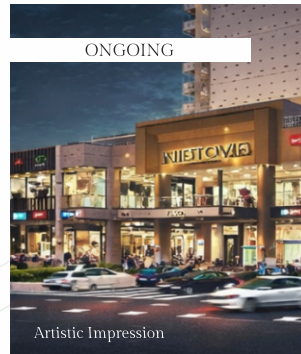
PYRAMID SQUARE 85
SECTOR 85



GRAND VISTA
SECTOR 73



PRIDE PLAZA
SECTOR 76



MIDTOWN PLAZA
SECTOR 59



MIDTOWN
SECTOR 59



URBAN HOMES - II,
EXTENSION SECTOR 86



IMPERIAL ESTATE
SECTOR 70 A



PALM COUNTY
SECTOR 78



ABOUT MIDTOWN PLAZA

Introducing Midtown Plaza - the most extraordinary integrated development that is destined to inspire and rejuvenate the thriving city of Gurugram. This immaculate urban centre will be a comprehensive destination of leisure comprising of high street retail shops & convenience stores.

Here, meticulously planned details enhance the shopping experience: Pedestrian-friendly pathways, convenient parking, glittering frontages, open landscaped areas and buzzy sidewalk cafes & restaurants.

PRIME ATTRIBUTES

- 2 Business Plazas with Ground + 2 Floor
- Open Space for Greens & Tree-lined Avenues.
- Naturally Lit Areas
- Multiple entry & exit points for retail patrons.
- Wide internal driveway for congestion free movement.
- 24/7 Security Systems
- High Speed Elevators



HIGH - STREET RETAIL

For High Profit Margins

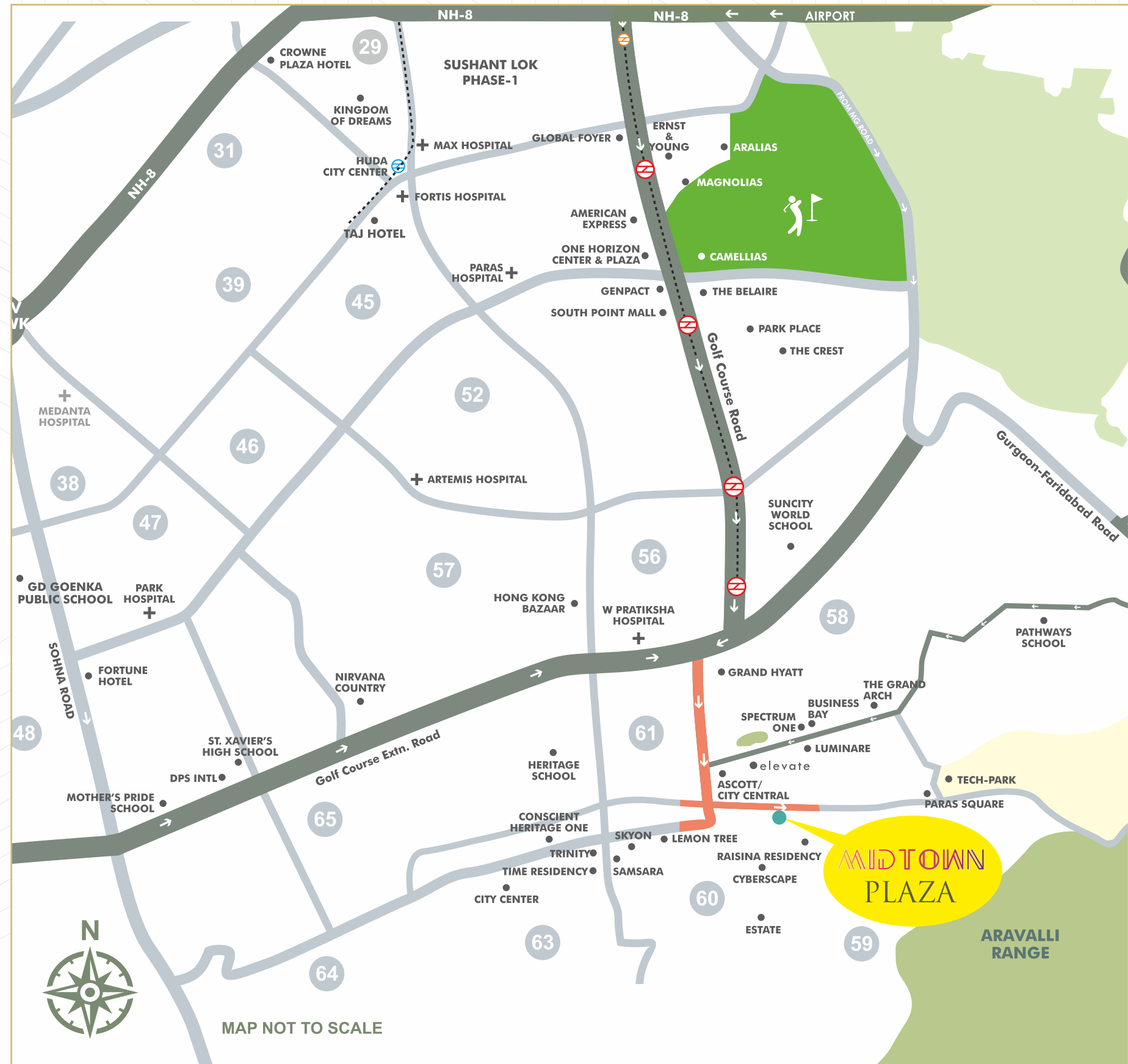
THE NEXT WONDER IN RETAIL Be Seen, Better Than Ever



Situated in Sector 59, Gurgaon MIDTOWN Plaza enjoys a premium location, where life extends beyond the home to embrace the everyday. With over 28,000+ square feet of retail space spread over two floors, The MIDTOWN Plaza gives you the perfect opportunity to mix business with pleasure and also meet your domestic needs.

With a captive catchment area provided by the integrated residential community of MIDTOWN Plaza, the retail complex at MIDTOWN makes great sense for supermarkets, fashion and garment stores, banks, restaurants and even boutique shops. Enhanced connectivity between Golf Course Road and Golf Course Extension Road along with Rapid Metro, will leave you spoilt for choice.





NESTLED IN THE NEXT GROWTH CORRIDOR



Geography has always been our master. It has pushed us, moved us and most importantly transformed us to become what we always wanted to be. So it's imperative to be at the right place at the right time and MIDTOWN Plaza is a classic example of that.

Located at one of the finest business cum recreational hub of the city, MIDTOWN Plaza sends a strong signal to those who want to embark on a journey that's not only enriching but also rewarding.



high street retails & entertainment zone

MIDTOWN PLAZA
SECTOR 59, GURUGRAM

PAMPER THE BIG SHOPPER IN YOU IN A LUXURY ATMOSPHERE



MIDTOWN Plaza is strategically located on high growth corridor of Golf Course Extension Road, Sector 59, Gurgaon. The project has an ideal commercial project mix of Retail, Anchor Store, Restaurant, Hypermarket & Medical Suites. Exclusive Retail Promenade with rich landscaping providing a delightful shopping experience for the Patrons.

The retail complex, destined to set new standards in retail spaces. Sophisticated design elements catering to the upper segment of the market. Refined architectural design focused on modernized features and an elevated material palette.

RETAIL & ANCHOR STORES

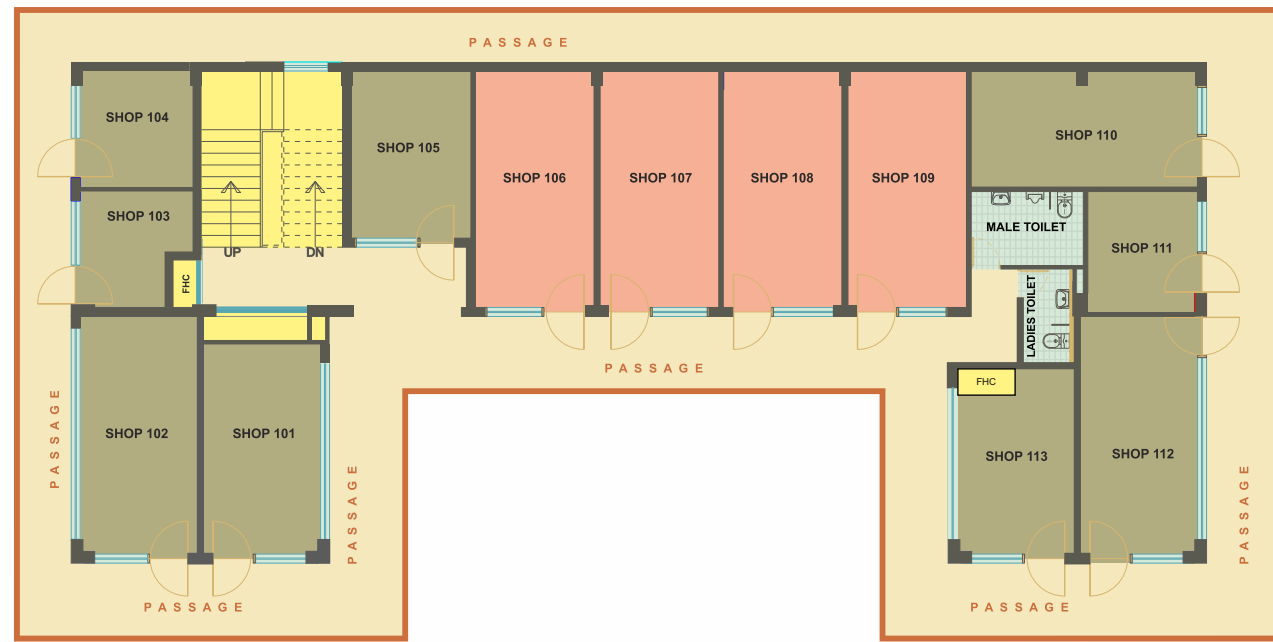


CAFETERIAS & RESTAURANTS

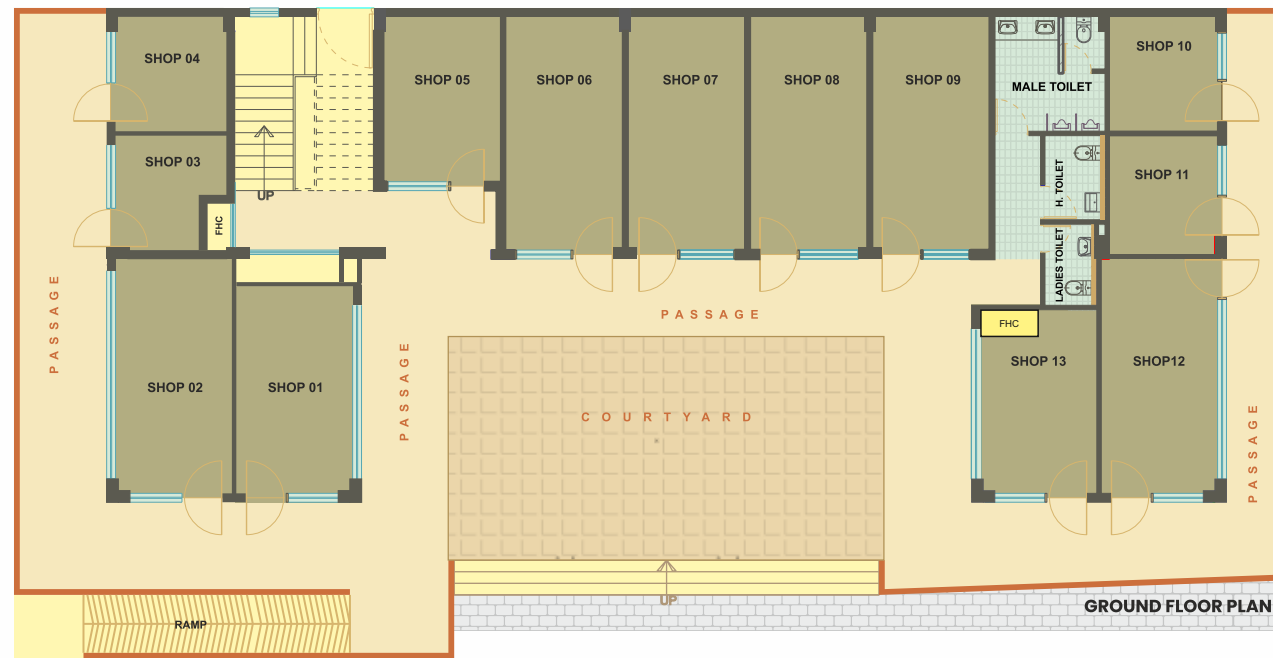


HYPERMARKET & CONVENIENCE STORES





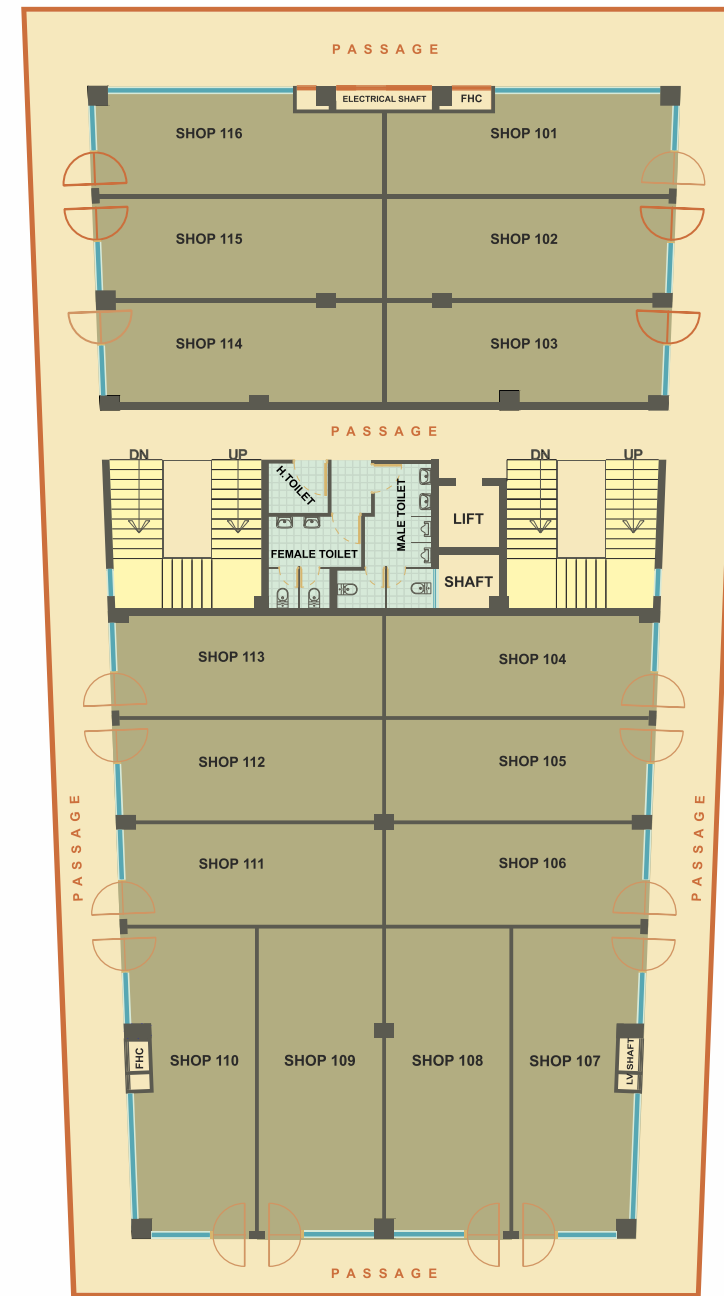
FIRST FLOOR PLAN



GROUND FLOOR PLAN

Unit No	Floor Type	Saleable Area	Carpet Area	Unit No	Floor Type	Saleable Area	Carpet Area
101	First Floor	384.07 Sq. Ft	202.142 Sq. Ft	01	GROUND FLOOR	386.862 Sq. Ft	203.612 Sq. Ft
102	First Floor	430.227 Sq. Ft	226.435 Sq. Ft	02	GROUND FLOOR	430.85 Sq. Ft	226.763 Sq. Ft
103	First Floor	171.662 Sq. Ft	90.348 Sq. Ft	03	GROUND FLOOR	175.99 Sq. Ft	92.626 Sq. Ft
104	First Floor	189.01 Sq. Ft	99.479 Sq. Ft	04	GROUND FLOOR	189.657 Sq. Ft	99.819 Sq. Ft
105	First Floor	273.31 Sq. Ft	143.85 Sq. Ft	05	GROUND FLOOR	274.493 Sq. Ft	144.47 Sq. Ft
106	First Floor	391.274 Sq. Ft	205.934 Sq. Ft	06	GROUND FLOOR	388.683 Sq. Ft	204.57 Sq. Ft
107	First Floor	391.274 Sq. Ft	205.934 Sq. Ft	07	GROUND FLOOR	389.978 Sq. Ft	205.252 Sq. Ft
108	First Floor	391.274 Sq. Ft	205.934 Sq. Ft	08	GROUND FLOOR	393.809 Sq. Ft	207.268 Sq. Ft
109	First Floor	391.274 Sq. Ft	205.934 Sq. Ft	09	GROUND FLOOR	391.209 Sq. Ft	205.9 Sq. Ft
110	First Floor	363.985 Sq. Ft	191.571 Sq. Ft	10	GROUND FLOOR	187.387 Sq. Ft	98.625 Sq. Ft
111	First Floor	193.691 Sq. Ft	101.943 Sq. Ft	11	GROUND FLOOR	191.187 Sq. Ft	100.625 Sq. Ft
112	First Floor	426.903 Sq. Ft	224.686 Sq. Ft	12	GROUND FLOOR	430.11 Sq. Ft	226.374 Sq. Ft
113	First Floor	325.97 Sq. Ft	171.563 Sq. Ft	13	GROUND FLOOR	326.415 Sq. Ft	171.797 Sq. Ft

Layout Plan, Midtown Plaza - B, Sector 59 Gurugram



FIRST FLOOR PLAN



FRONT SIDE GROUND FLOOR PLAN

Layout Plan, Midtown Plaza-A, Sect 59 Gurugram

Unit No	Floor Type	Saleable Area	Carpet Area	Unit No	Floor Type	Saleable Area	Carpet Area
101	First Floor	556.8 Sq. Ft	293.053 Sq. Ft	01	GROUND FLOOR	558.59 Sq. Ft	294 Sq. Ft
102	First Floor	543.297 Sq. Ft	285.946 Sq. Ft	02	GROUND FLOOR	540.843 Sq. Ft	284.654 Sq. Ft
103	First Floor	538.272 Sq. Ft	283.301 Sq. Ft	03	GROUND FLOOR	535.934 Sq. Ft	282.071 Sq. Ft
104	First Floor	510.605 Sq. Ft	268.739 Sq. Ft	04	GROUND FLOOR	518.365 Sq. Ft	272.824 Sq. Ft
105	First Floor	511.549 Sq. Ft	269.236 Sq. Ft	05	GROUND FLOOR	505.257 Sq. Ft	265.925 Sq. Ft
106	First Floor	501.213 Sq. Ft	263.797 Sq. Ft	06	GROUND FLOOR	513.223 Sq. Ft	270.117 Sq. Ft
107	First Floor	736.695 Sq. Ft	387.734 Sq. Ft	07	GROUND FLOOR	724.897 Sq. Ft	381.525 Sq. Ft
108	First Floor	721.955 Sq. Ft	379.976 Sq. Ft	08	GROUND FLOOR	717.402 Sq. Ft	377.58 Sq. Ft
109	First Floor	721.522 Sq. Ft	379.749 Sq. Ft	09	GROUND FLOOR	715.469 Sq. Ft	376.562 Sq. Ft
110	First Floor	766.374 Sq. Ft	403.355 Sq. Ft	10	GROUND FLOOR	690.287 Sq. Ft	363.309 Sq. Ft
111	First Floor	493.599 Sq. Ft	259.789 Sq. Ft	11	GROUND FLOOR	496.476 Sq. Ft	261.303 Sq. Ft
112	First Floor	500.348 Sq. Ft	263.341 Sq. Ft	12	GROUND FLOOR	503.247 Sq. Ft	264.867 Sq. Ft
113	First Floor	507.097 Sq. Ft	266.893 Sq. Ft	13	GROUND FLOOR	508.625 Sq. Ft	267.697 Sq. Ft
114	First Floor	534.027 Sq. Ft	281.067 Sq. Ft	14	GROUND FLOOR	525.962 Sq. Ft	276.822 Sq. Ft
115	First Floor	538.388 Sq. Ft	283.362 Sq. Ft	15	GROUND FLOOR	537.775 Sq. Ft	283.039 Sq. Ft
116	First Floor	610.21 Sq. Ft	321.163 Sq. Ft	16	GROUND FLOOR	559.724 Sq. Ft	294.592 Sq. Ft

Disclaimer: Promoter urges every applicant to inspect the project site and shall not merely rely upon any artistic/architectural impression/images, plan or sales brochure and, therefore, requests to make personal judgment prior to submitting an application for allotment. The Project is being developed in phases, hence, certain facilities/amenities etc, may be used by allottee of other phases. *Rate mentioned above does not include GST and other statutory charges, if applicable. T & C of Affordable Housing Policy, 2013 Apply. 1 sq. mt. = 10.764 sq. ft., Building Plan approval no. ZP-1388/JD(RD)/2020/4137 dated 12/02/2020, Government approval: License No. 133 of 2019 dated 17/12/2019.

Layout Plan, Midtown Plaza – A, Sector 59 Gurugram



Unit No	Floor Type	Saleable Area	Carpet Area
201	Second Floor	368.311 Sq. Ft	193.848 Sq. Ft
202	Second Floor	345.438 Sq. Ft	181.809 Sq. Ft
203	Second Floor	345.438 Sq. Ft	181.809 Sq. Ft
204	Second Floor	358.042 Sq. Ft	188.443 Sq. Ft

SECOND FLOOR PLAN



Disclaimer: Promoter urges every applicant to inspect the project site and shall not merely rely upon any artistic/architectural impression/images, plan or sales brochure and, therefore, requests to make personal judgment prior to submitting an application for allotment. The Project is being developed in phases, hence, certain facilities/amenities etc. may be used by allottee of other phases. *Rate mentioned above does not include GST and other statutory charges, if applicable. T & C of Affordable Housing Policy, 2013 Apply. 1 sq. mt. = 10.764 sq. ft. Building Plan approval no. ZP-1388/J(D)/2020/4137, dated 12/02/2020. Government approval. License No. 133 of 2019 dated 17/12/2019.



A Hang-Out, Perfect for a Pause HIGH-STREET RETAIL EXPERIENCE

UPSCALE AMENITIES

- Effective planning allows street level entrance overlooking pedestrian walkway all around the complex
- Shops for International Style retail format with independent service utilities
- Provision of Wet Points in all Units
- Independent shops

DESIGN SPECIFICATIONS

- Large store fronts & glazing area for units
- Exterior: Combination of glass, stone, granite, tiles, ACP & painted surface
- Exterior Flooring: Combination of Granite, Tiles, Stone & Interlocking tiles
- Lobbies: Combination of Stone, Tiles, HPL, ACP painted surface
- Unit Finishes: Plastered walls with exposed RCC slabs
- Washroom: Combination of Tiles/ Painted surface on DADO, Stone/Tile, Finished Countertops, HPL/Laminated partition door
- Structure: Earthquake resistant RCC structure
- Fire & Life Safety: Provided as per norms.